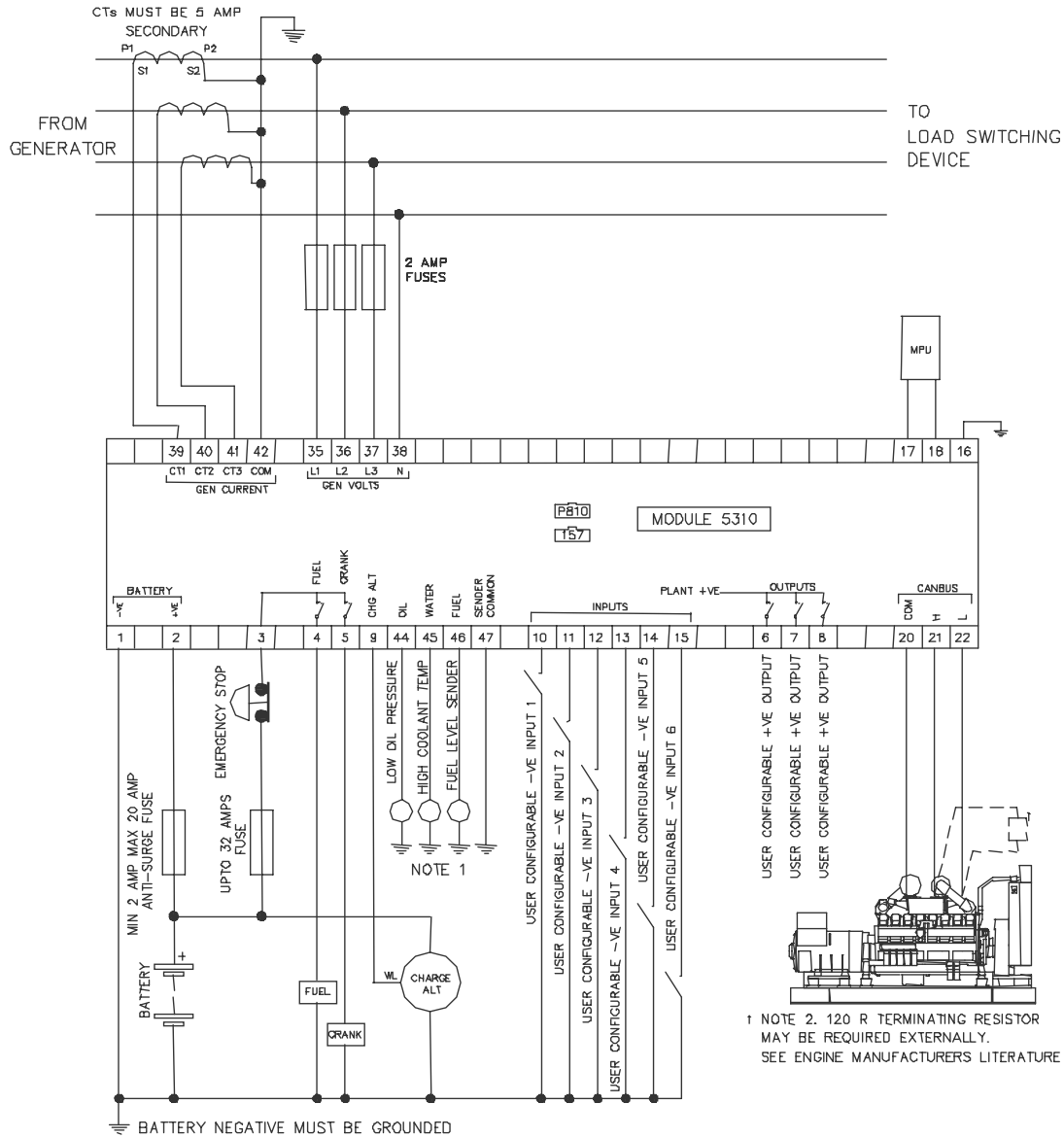


TYPICAL WIRING DIAGRAM



BATTERY NEGATIVE MUST BE GROUNDED

TERMINALS SUITABLE FOR 22-16 AWG (0.6mm - 1.3mm) FIELD WIRING

TIGHTENING TORQUE = 0.8Nm (7lb-in)

NOTE 1

THESE GROUND CONNECTIONS MUST BE ON THE ENGINE BLOCK, AND MUST BE TO THE SENDER BODIES.
THE GROUND WIRE TO TERMINAL 47 MUST NOT BE USED TO PROVIDE A GROUND CONNECTION TO ANY OTHER DEVICE

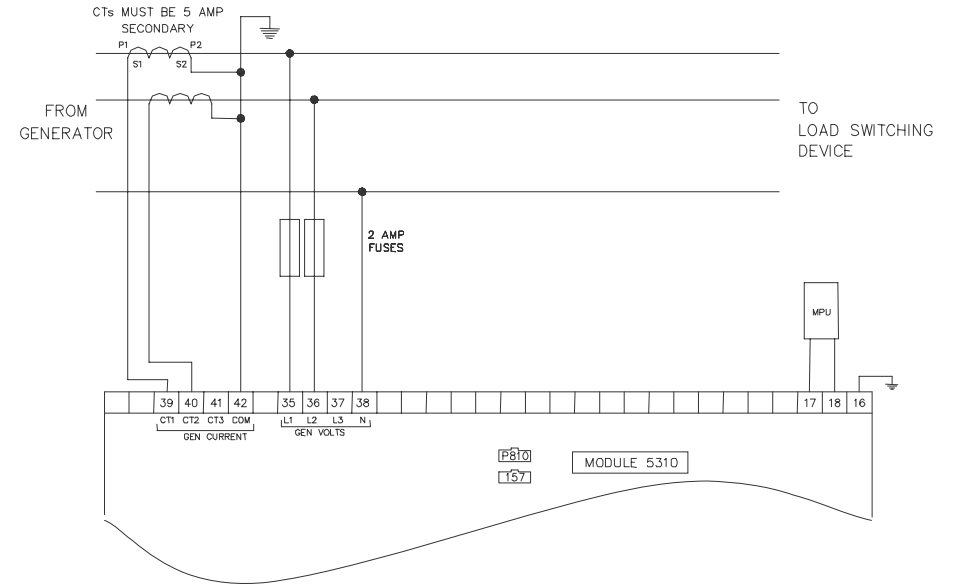
DIMENSIONS

Module dimensions : 240mm x 172mm x 57mm (9.5" x 6.8" x 2.25")

Panel cutout : 220mm x 160m (8.7" x 6.3")

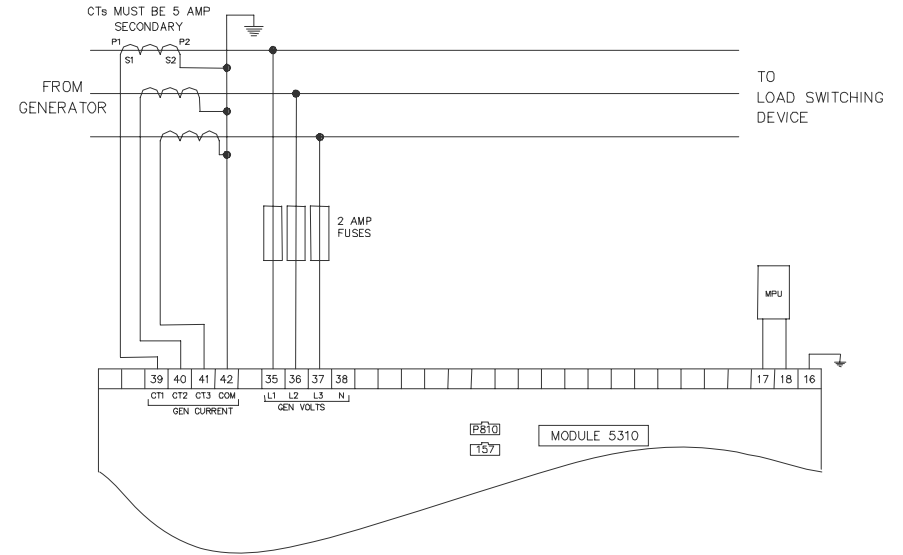
ALTERNATIVE AC WIRING

2 phase, 3 wire (centre tap neutral)



ALTERNATIVE AC WIRING

3 phase, 3 wire



† NOTE 2. 120 R TERMINATING RESISTOR MAY BE REQUIRED EXTERNALLY. SEE ENGINE MANUFACTURERS LITERATURE